



Luddenden CE School  
Dene View  
Luddendenfoot  
HX2 6PB

**886353**

#### SCHOOL STAFF

Lisa Hoyle - Headteacher

School Business Manager

Sharon Parker

#### Teachers

Tija Serrant-Fontaine - Bubble 1

Emma Phillips - Bubble 1/2

Julian Pilling - Bubble 2

Vicky Dixon/Julie Ames - Bubble 3

Michelle Ryan - Bubble 4

Ian Lewis—Bubble 5

Emma Robertshaw/

Lizzie Stansfield - Bubble 6

#### Support Staff

Zoe Spellman, Kelly Sheriff,

Kelly Taylor, Kathryn Hoyle,

Ruth Shepherd,

Adele Thompson, Nicki Briggs,

Beth Painter-Naylor,

Louise Warden, Louise Abel,

Aneika Turner, Christine Goodman,

Sophie Briggs, Carol Wilkinson

#### Cleaning Staff

Ann Frankland, Jana Jarosova

#### Lunchtime Staff

Ann Frankland, Jana Jarosova,

Lindsey Milton, Jay Culpán,

Heidi Hirst, Dionne Marsden,

Suzanne Taylor-Calvert,

Carol Wilkinson, Nic Cutts

Site Manager - Jay Culpán

#### GOVERNORS

Jeremy Warden (Chair), Helen

Freeman, Christine Goodman,

Ian Sparks, David Pegg,

Rachel Pegg, Dan Burns, Alison

Lemen, Tony Berwick, Ian Ross,

Collette McCleod, Lucie Fenton

Rebecca Holman

Clerk - Deborah Tynan

#### SCHOOL DINNERS

Only **£2.00** a day

(£10 pw) Please

pay in

advance

Via the app.



#### TERM DATES

Close - 1st April

Open - 19th April

Close - 3rd May

Close - 28th May

Open - 7th June

Close - 23rd July

Open - 7th Sept

Close - 22nd Oct

Open - 2nd Nov

Close - 17th Dec

## WEEKLY Roundup

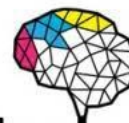
It's been another fabulous week at the best school in the world—outstanding work, brilliant behaviour and some very funny sights for today's Red Nose Day celebrations! Special mentions go to Elijah, Edie and Edward for their spectacularly funny outfits.

#### In other news;

- Children have been learning about the census in preparation for the big day on Sunday—see below...
- Watch this space for some new bikes and other 'wheelie' great outdoor kit in Early Years.
- Year 2 & 3 enjoyed a special Lent Journey with our friends from Hand to Mouth.

### EMOTIONAL HEALTH & WELL-BEING RESOURCES

Check out the leaflets sent with this newsletter for some useful information. The leaflets are designed to help support our children with getting back to the school routine and alleviate any feelings of frustration. Worry and uncertainty.



**Open Minds**  
For Children and Young People in Calderdale

### It's that time again...

Our legendary

## Easter Egg Raffle

will take place on 1st April.

**20p per ticket  
on sale now!**

Prizes are donated by school staff and any other donations are very gratefully received. If you would like to donate a prize please just send it to the school office.



## DON'T FORGET—SUNDAY 21st MARCH

# census 2021

**You must complete the census by law  
or you could be fined up to £1000!**

**The census is a unique survey** that takes place every 10 years in **England and Wales.**

By taking part, you'll help inform decisions that shape your community.

**census 2021**



# This week's Gold Book Superstars are....

## Oak Class

- Leni & Maja for writing lovely poems about hope.
- Charlie, Katie, Eesaa & Naomi for their hard work on algebra.

## Elm Class

- Nola - Amazing work with fractions for two weeks in a row now!
- Ayse - Great work in everything, especially topics she found harder.
- Elijah - Oh my goodness, what an outfit for Comic Relief. He went all out!
- Max - Excellent attention to detail in his work, especially with punctuation in all his writing and precision in maths
- Jack - What a fractions hero! I really enjoyed working with you to help crack fractions. You even did extra work at home! Nailed it!

## Sycamore Class

- Elizabeth – overcoming fears and succeeding
- Jessica – we're all really proud of her
- Mazie – for embracing fractions when she found it difficult (even if she did need to do 100 star jumps to get there!)

## Pine Class

- Zac & Blain – for working brilliantly together, supporting each other and having lots of fun in PE.
- Daniel – for working extra hard in maths and computing.
- Cole – for having a great first week and impressing us all with his excellent climbing skills!

## Willow Class

- Milo, Zack, Charlie, Jamaal, Riley Genevieve, Rae, Harriet and Zachary for outstanding learning all week.

## Beech Class

- Skye – Settling in very well into our class.
- SK, Mays, George, Oscar, David – all working hard and having a good week.

## Acorns

- SK – for growing a beautiful fairy garden at home
- Reye – for settling in so quickly and doing great work
- Isobel & Donovan – for fantastic jumping and landing in PE

These children will all receive special stickers.



**Luddenden CE School has two overarching rules;**

- 1. Keep everybody safe**
- 2. Keep everybody happy**

These two rules cover pretty much everything and help maintain good order, effective learning and positive relationships.

Our Behaviour Policy (which can be found on our website) describes in detail how behaviour is managed. The current situation regarding COVID-19 has means that it is very important that all our pupils behave safely and appropriately, therefore we have updated our behaviour expectations. These are designed to be clear, reasonable, and proportionate, and to support the protective measures in place with regards movement and hygiene.



### **ADDITIONAL BEHAVIOUR EXPECTATIONS DURING CORONAVIRUS**

In the interests of infection control, social distancing and keeping each other safe, children will need to behave slightly differently now they have returned to school. There are new systems, routines and expectations that they need to adhere to. We acknowledge that after such a long time some children may find it hard. Pupils will be supported to reintegrate back into school life through the curriculum, and pastoral provision.

As well as following our existing Behaviour Policy, pupils are expected to;

- follow any altered routines for arrival or departure
- follow school instructions on hygiene, such as hand-washing and sanitising
- follow instructions on who pupils can socialise with at school
- move around the school as per specific instructions (for example, one-way systems, out of bounds areas, queuing)
- follow expectations about sneezing, coughing, tissues and disposal ('catch it, bin it, kill it') and avoiding touching their mouth, nose and eyes with hands
- tell an adult if they are experiencing symptoms of coronavirus (COVID-19)
- follow rules about sharing any equipment or other items including drinking bottles
- follow expectations about breaks or play times, including where they may or may not play
- use the toilets as directed
- try to maintain social distancing as appropriate for their age
- behave appropriately towards adults and each other

#### **Pupils must not;**

- cough or spit at or towards any other person
- ignore or refuse to follow adult instruction
- leave the classroom or school building without permission

**Any breach of these behaviour principles can compromise the health and safety of other members of the school family and could result in fixed term exclusion and/or permanent exclusion.**